



**Stó:lō
Xwexwilmexw
Treaty
Association**

Land Use Planning Subcommittee Terms of Reference

Vision:

The vision of the Land Use Planning Subcommittee is to support the SXTA on land-based decision making.

Purpose:

The purpose of the Land Use Planning Subcommittee is to:

1. Facilitate collaboration with the SXTA communities to recommend the best use of Treaty Settlement Lands (TSL) to meet SX needs;
2. Make recommendations on future acquisition of lands of interest; and
3. Make recommendations on Incremental Treaty Agreement (ITA) options and other pre-Treaty land-related decisions, such as Treaty Related Measure (TRM) projects.
4. Review lands off-TSL to provide input into land use planning, management, and decision-making.

Membership:

- Chief Terry Horne Yeqwyeqwí:ws
- Councillor Barb Leggat Leq'á:mel
- Councillor Deb Schneider Sq'ewá:lxw
- Councillor Loren Muth Ch'iyáqtel (Chair)

Technical Staff Support:

- To provide land use planning related technical support
- Shana Roberts, Karen Brady, Dave Schaepe, and Lisa Davidson

Administrative Staff Support:

- To provide meeting minutes, scheduling, track action items, meeting logistics (room booking, catering, etc.)
- To be confirmed

Building #10
7201 Vedder Road
Chilliwack, BC V2R 4G5

Tel (604) 824-2420
Fax (604) 824-0278

www.sxta.bc.ca



Stó:lō Xwexwilmexw Treaty Association

Links to Other SXTA Subcommittees and Working Groups:

Please refer to the Subcommittee Communications Chart below for the links between the Land Use Planning Subcommittee and the other SXTA Subcommittees and Working Groups.

Communications:

Please refer to the Subcommittee Communications Chart below to see how information is communicated by the Land Use Planning Subcommittee to the other SXTA Subcommittees and Working Groups.

Next Steps:

1. Develop Incremental Treaty Agreement (ITA) options;
2. Review Land Use Planning Treaty Related Measures (TRM) project proposal;
3. Define the role of the Land Use Planning Subcommittee as a Steering Committee for the Land Use Planning Treaty Related Measures (TRM) project;
4. Participate on the Steering Committee for the ongoing Capital Infrastructure Treaty Related Measures (TRM) project;
5. Obtain and/or create spatial files for current on-reserve plans;
6. Harmonize the current on-reserve land codes and plans;
7. Provide guidance on issues arising from the Tripartite Lands Technical Working Group (LTWG) such as commonages, orphan lands, submerged lands, ground-truth reserve lands, contaminated lands, role off-TSL, and other issues as needed;
8. Provide input to SXTA Outreach as needed to advise on community engagement around Treaty Settlement Lands (TSL);
9. Identify community members with relevant skill sets for potential involvement in the Land Use Planning Subcommittee and/or related activities.

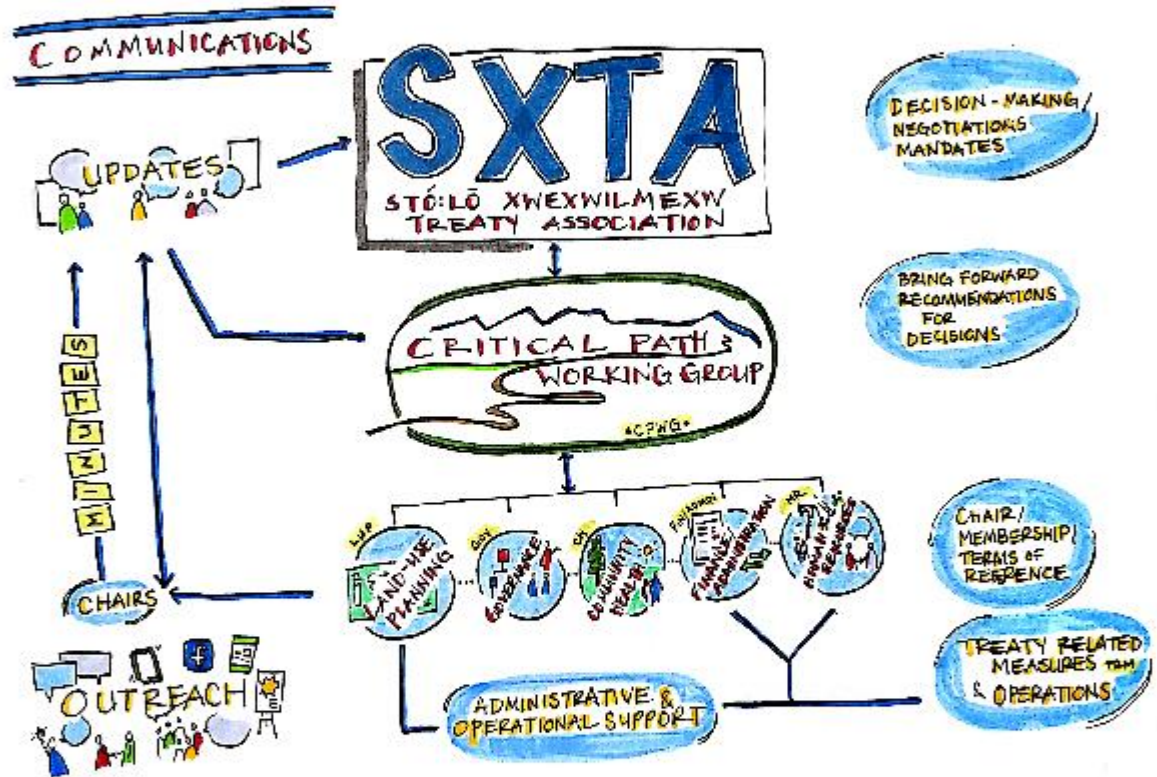
Building #10
7201 Vedder Road
Chilliwack, BC V2R 4G5

Tel (604) 824-2420
Fax (604) 824-0278

www.sxta.bc.ca



Stó:lō
Xwexwilmexw
Treaty



Building #10
7201 Vedder Road
Chilliwack, BC V2R 4G5
Tel (604) 824-2420
Fax (604) 824-0278
www.sxta.bc.ca

Scanned by CamScanner



**Stó:lō
Xwexwilmexw
Treaty
Association**

Building #10
7201 Vedder Road
Chilliwack, BC V2R 4G5

Tel (604) 824-2420
Fax (604) 824-0278

www.sxta.bc.ca